

Trusted. Tested. Tough.®

Product information presented here reflects conditions at time of publication. Consult factory regarding discrepancies or inconsistencies.



SECTION: 2.50.030

FM1596

1019

Supersedes

0717

MAIL TO: P.O. BOX 16347 • Louisville, KY 40256-0347  
 SHIP TO: 3649 Cane Run Road • Louisville, KY 40211-1961  
 TEL: (502) 778-2731 • 1 (800) 928-PUMP • FAX: (502) 774-3624

Visit our website:  
[zoellerpumps.com](http://zoellerpumps.com)

## ELECTRICAL CONTROL PANELS - FOR SIMPLEX INSTALLATIONS

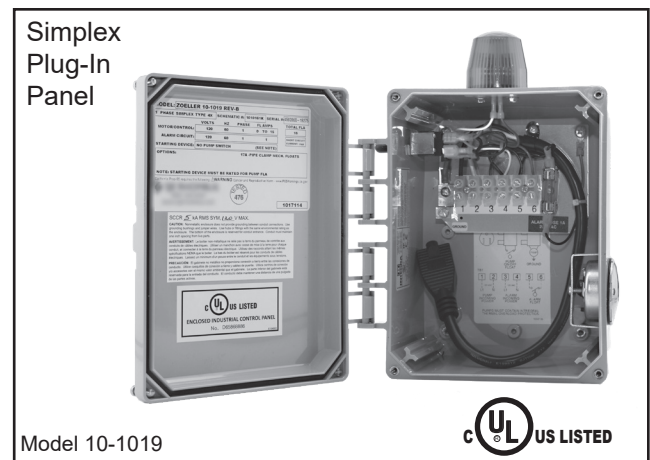
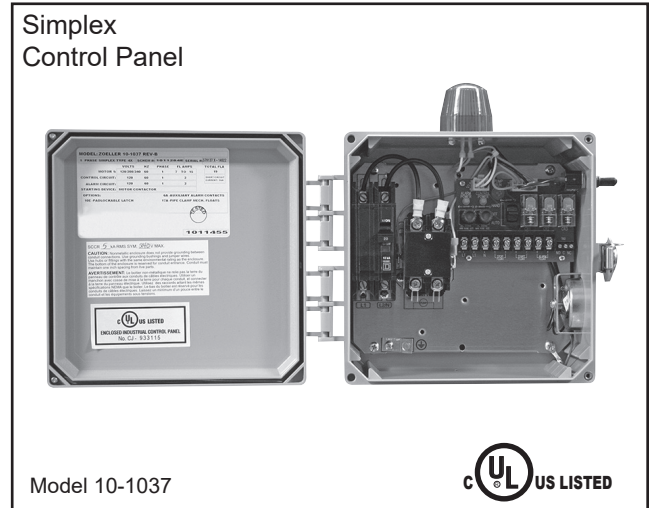
An Electrical Control Panel is used on a Simplex pump application where automatic electrical cycling of the pump is desired for added protection in residential or commercial applications. A Control Panel is required for all systems using a nonautomatic pump. The built-in alarm system, a standard feature, will activate when the water level becomes unusually high. All electrical systems must be installed by a qualified electrician and according to the National Electrical Code. (See Section 430-71 through 430-113, plus any others that apply.)

### SINGLE PHASE CONTROL PANEL FEATURES

- 115-200-230 Volts
- Dead front panel
- Clear inner door (10-0125 only)
- Includes (3) 20 ft. control float switches
- Equipment disconnect (10-0125 only)
- Motor contactor (all models except 10-1019 and 10-1023)
- NEMA 4X watertight enclosure with lockable latch
- Top-mounted alarm light
- Alarm horn provides audio warning of alarm condition (83 to 85 decibel rating)
- Pump run indicator light
- Horn silence and alarm test toggle switches
- HOA switch (all models except 10-1019 and 10-1023)
- Complete installation instructions included
- Lockable latch
- 2 year warranty
- Dry auxiliary contact (not available in Plug-In Panels)

### SINGLE PHASE SIMPLEX PLUG-IN CONTROL PANEL

- 115 V model 10-1019 or 230 V model 10-1023
- NEMA 4X enclosure with hinged cover
- Receptacle for use with piggyback pump switch
- Alarm horn (83 to 85 decibel rating)
- Terminal strip
- Horn silence switch to turn alarm on or off
- Alarm float only



SINGLE PHASE SIMPLEX PUMP CONTROL/ALARM SYSTEM				
Item #	Volts	Amp Range	Float Switches Included	Features
10-1019	115 V	0-15	Alarm Float Only	Plug-In
10-1023	230 V	0-15	Alarm Float Only	Plug-In
10-1036	115V, 200-230 V	0-7	Three-20' Control Floats	Circuit Breaker Disconnect
10-1037	115V, 200-230 V	7-15	Three-20' Control Floats	Circuit Breaker Disconnect
10-1038	115V, 200-230 V	15-20	Three-20' Control Floats	Circuit Breaker Disconnect
10-0125*	115V, 200-230 V	0-20	Three-20' Control Floats	Equipment Disconnect

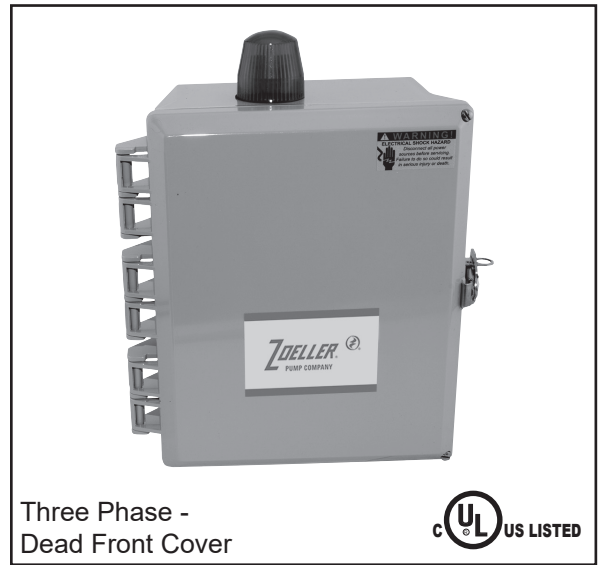
NOTE: 600 and X600 Series single phase pumps require special panels that include start components. See Selection Guide FM1228 and FM1705 for correct panel selection.

NOTE: All variable level float switches in this section are mechanically activated and do not contain mercury.

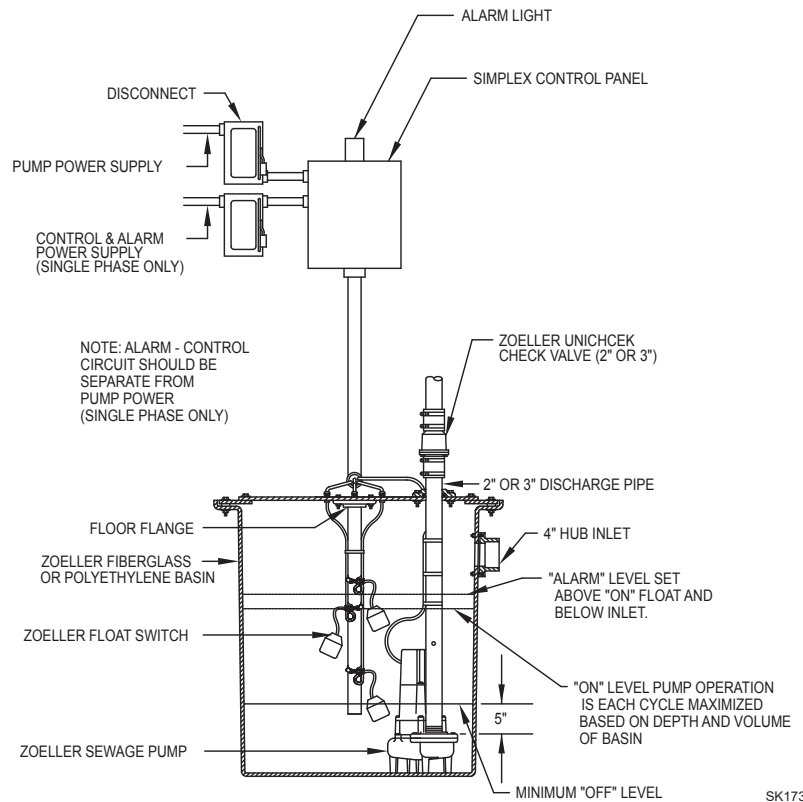
\* 10-0125 Branch Circuit Protection provided by the installing electrician.

### THREE PHASE SIMPLEX CONTROL PANEL FEATURES

- 200-230-460-575 Volts
- NEMA 4X - watertight enclosure with lockable latch
- Hand-off toggle switch
- Green pump run light
- Alarm test & silence switches
- Red alarm beacon and audible alarm for a high water condition (83 to 85 decibel rating)
- Motor protection switch with overload protection
- Magnetic starter
- Numbered terminal strip for connecting pumps and variable level float switches
- Dry auxiliary contacts for remote alarm devices
- Three float operation (floats not included - See FM0526)
- The use of off-the-shelf components provide for relatively easy field maintenance and repair
- 2-year warranty



THREE PHASE SIMPLEX PUMP CONTROL PANELS			
ITEM #	DIMENSIONS	VOLTS	AMP RANGE
10-1074	12 X 10 X 6	200/230/460	1.0 - 1.6
10-1076	12 X 10 X 6	200/230/460	1.6 - 2.5
10-1078	12 X 10 X 6	200/230/460	2.5 - 4.0
10-1080	12 X 10 X 6	200/230/460	4.0 - 6.3
10-1082	12 X 10 X 6	200/230/460	6.0 - 10.0
10-1083	12 X 10 X 6	200/230/460	9.0 - 14.0
10-1084	12 X 10 X 6	200/230/460	13.0 - 18.0
10-1086	12 X 10 X 6	200/230/460	17.0 - 23.0
10-1132	12 X 10 X 6	575	1.6 - 2.5
10-1134	12 X 10 X 6	575	2.5 - 4.0
10-1136	12 X 10 X 6	575	4.0 - 6.3



### SEQUENCE OF OPERATION FOR SIMPLEX PANEL

1. Operation can begin after the following:
  - Correct voltage is supplied to panel
  - A good ground is supplied to panel
  - Pump is connected correctly to panel
  - Panel circuit breaker is closed
  - Floats are installed properly
  - Overload protection is adjusted to pump nameplate amps
  - Pump HOA Switch is set to "Auto"
2. When the "Stop" and "Start" floats are closed the Pump will energize and the External Pump Run Light will illuminate. The Pump will remain operational until the "Stop" float opens.
3. In the event the liquid level continues to rise the "Alarm" float will be closed. When the "Alarm" float is closed the following will occur:
  - The External High Water Light will illuminate

- The Audible High Water Horn will sound
  - The Auxiliary Dry Contacts will close
4. The Audible High Water Horn can be silenced by pressing the Alarm Silence Button. When the "Alarm" float is opened the External High Water Light, Audible High Water Horn and Dry Auxiliary Contacts will be reset.
- \*A three phase panel has a multi-tap transformer with secondary fusing.

**CAUTION** All electrical systems must be installed by a qualified licensed electrician according to the National Electrical Code. (See section 430-71 through 430-113 plus any others that apply)

Refer to FM1228 and FM1705 for correct selection of Simplex Panels.