

## Dimensional Document

# Viega SeaPress® Metric Fitting System

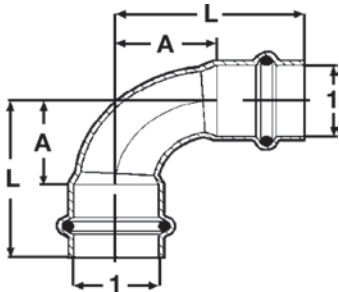


This document is subject to updates. For the most current Viega technical literature please visit [viega.us](http://viega.us).



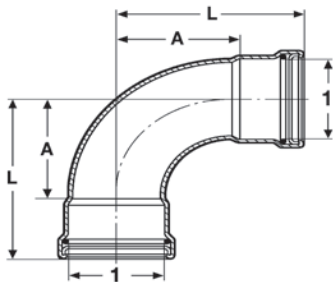
Viega products must be installed by trained installers. MegaPress credential training is provided at no cost by Viega and is recommended every two years. Please contact Viega to arrange credential training onsite or at our training facility. **Installation by non-professionals may void Viega LLC's warranty.**

### Copper Nickel Elbow 90° (P x P) — Model 0316

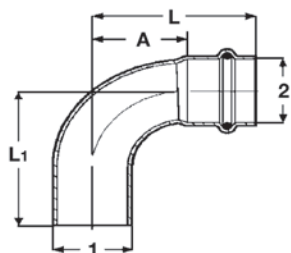


Part No.	Size (mm)	A (mm)	L (mm)
	1		
453169	15	18	40
453176	22	26	49
453183	28	34	58
453190	35	42	68
453206	42	50	86
453213	54	65	105

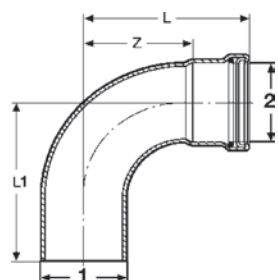
### Copper Nickel XL-Elbow 90° (P x P) — Model 0316XL



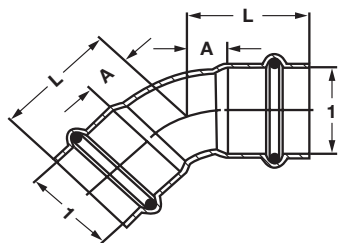
Part No.	Size (mm)	A (mm)	L (mm)
	1		
556570	76.1	99	149
556563	88.9	115	165
556556	108	138	198

**Copper Nickel Elbow 90° (FTG x P) — Model 0316.1**


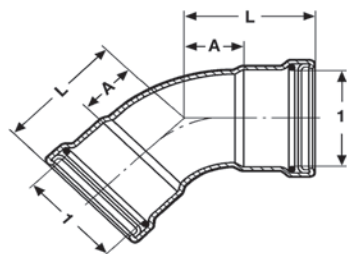
Part No.	Size (mm) 1 x 2	A (mm)	L (mm)	L1 (mm)
453220	15 x 15	18	40	42
453237	22 x 22	26	49	51
453244	28 x 28	34	58	60
453657	35 x 35	42	68	70
453664	42 x 42	50	86	90
453671	54 x 54	65	105	107

**Copper Nickel XL-Elbow 90° (FTG x P) — Model 0316.1XL**


Part No.	Size (mm) 1 x 2	A (mm)	L (mm)	L1 (mm)
556525	76.1 x 76.1	99	149	147
556532	88.9 x 88.9	115	165	162
556549	108 x 108	138	198	195

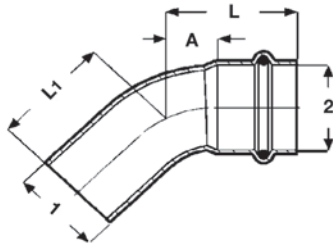
**Copper Nickel Elbow 45° (P x P) — Model 0326**


Part No.	Size (mm) 1	A (mm)	L (mm)
453886	15	8	30
453893	22	11	34
453909	28	14	38
453916	35	17	43
453923	42	21	57
453930	54	27	67

**Copper Nickel XL-Elbow 45° (P x P) — Model 0326XL**


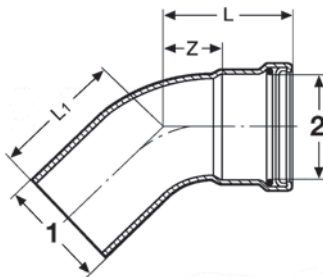
Part No.	Size (mm) 1	A (mm)	L (mm)
556617	76.1	46	96
556624	88.9	52	102
556631	108	61	121

**Copper Nickel Elbow 45° (FTG x P) — Model 0326.1**



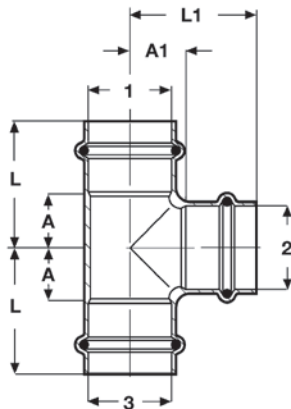
Part No.	Size (mm) 1 x 2	A (mm)	L (mm)	L1 (mm)
453947	15 x 15	8	30	32
453954	22 x 22	11	34	36
453961	28 x 28	14	38	40
453978	35 x 35	17	43	45
453985	42 x 42	21	57	63
453992	54 x 54	27	67	69

**Copper Nickel XL-Elbow 45° (FTG x P) — Model 0326.1XL**



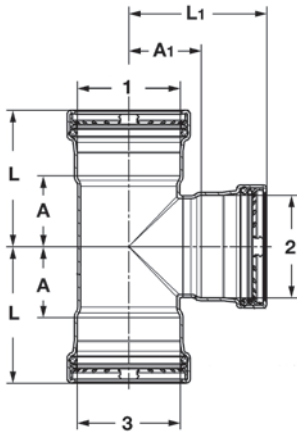
Part No.	Size (mm) 1 x 2	A (mm)	L (mm)	L1 (mm)
556587	76.1 x 76.1	46	96	93
556594	88.9 x 88.9	52	102	99
556600	108 x 108	61	121	119

**Copper Nickel Tee (P x P x P) — Model 0318**



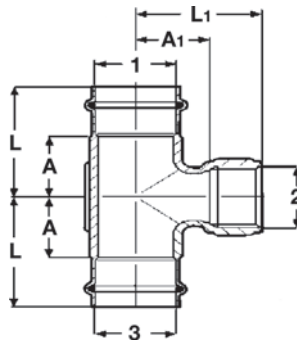
Part No.	Size (mm) 1 x 2 x 3	A (mm)	A1 (mm)	L (mm)	L1 (mm)
453473	15 x 15 x 15	19	11	41	33
453480	22 x 22 x 22	22	15	45	38
453497	28 x 28 x 28	24	19	48	43
453503	35 x 35 x 35	26	22	52	48
453534	42 x 35 x 42	22	29	58	55
453510	42 x 42 x 42	29	29	65	65
453541	54 x 35 x 54	27	35	68	61
453558	54 x 42 x 54	29	35	69	71
453527	54 x 54 x 54	35	35	75	75

**Copper Nickel XL-Tee (P x P x P) — Model 0318XL**



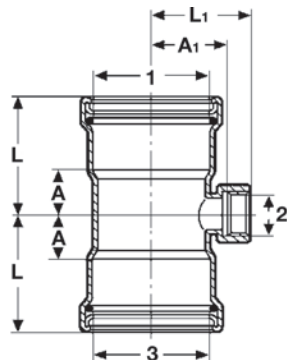
Part No.	Size (mm) 1 x 2 x 3	A (mm)	A1 (mm)	L (mm)	L1 (mm)
453794	76.1 x 35 x 76.1	30	50	80	77
453800	76.1 x 54 x 76.1	40	50	90	90
556228	76.1 x 76.1 x 76.1	51	53	101	103
453824	88.9 x 35 x 88.9	30	57	80	83
453831	88.9 x 54 x 88.9	40	56	90	97
453848	88.9 x 76.1 x 88.9	51	59	101	109
556235	88.9 x 88.9 x 88.9	57	59	107	109
453862	108 x 54 x 108	41	66	101	106
453879	108 x 76.1 x 108	52	69	112	119
556242	108 x 108 x 108	68	70	128	130

**Copper Nickel Tee (P x Rp Thread x P) — Model 0317.2**

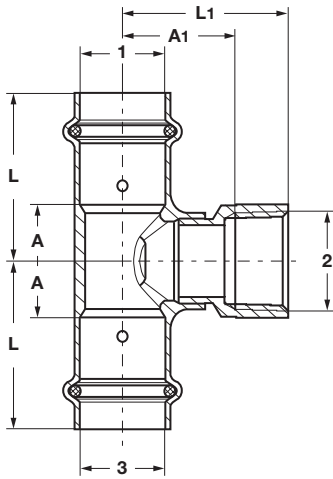


Part No.	Size (mm x in x mm)	A (mm)	A1 (mm)	L (mm)	L1 (mm)
453749	35 x ¼" x 35	20	35	46	46
453756	42 x ¼" x 42	17	42	53	52
453763	54 x ¼" x 54	20	46	60	57

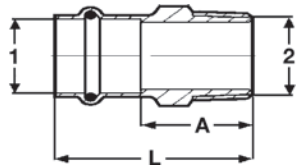
**Copper Nickel XL-Tee (P x Rp Thread x P) — Model 0317.2XL**



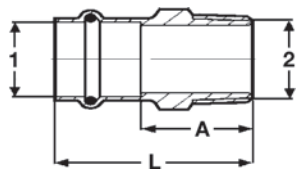
Part No.	Size (mm x in x mm)	A (mm)	A1 (mm)	L (mm)	L1 (mm)
453770	76.1 x ¼" x 76.1	25	51	75	62

**Copper Nickel Tee (P x FPT x P) — Model 0317.5**


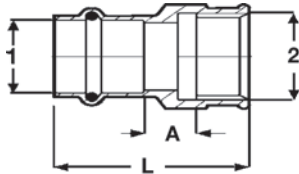
Part No.	Size (mm x in x mm)	A (mm)	A1 (mm)	L (mm)	L1 (mm)
<b>1 x 2 x 3</b>					
461072	35 x 3/4" x 35	20	32	46	46
461089	42 x 3/4" x 42	17	38	53	53
461096	54 x 3/4" x 54	20	43	60	57

**Copper Nickel Male Adapter (P x R-thread) — Model 0311**


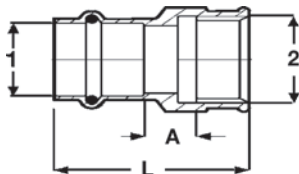
Part No.	Size (mm x in)	A (mm)	L (mm)
<b>1 x 2</b>			
452971	15 x 1/2"	22	44
452995	22 x 3/4"	27	50
452988	28 x 1"	31	55
453008	35 x 1 1/4"	36	62
453015	42 x 1 1/2"	36	72
453022	54 x 2"	40	80

**Copper Nickel Male Adapter (P x MPT) — Model 0311.5**


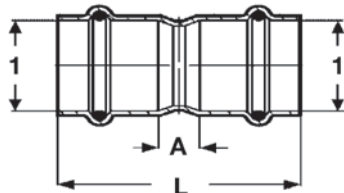
Part No.	Size (mm x in)	A (mm)	L (mm)
<b>1 x 2</b>			
460792	15 x 1/2"	25	47
460815	22 x 3/4"	29	52
460822	28 x 1"	34	58
461157	35 x 1 1/4"	38	64
461164	42 x 1 1/2"	36	72
461171	54 x 2"	39	79

**Copper Nickel Female Adapter (P x Rp-thread) — Model 0312**


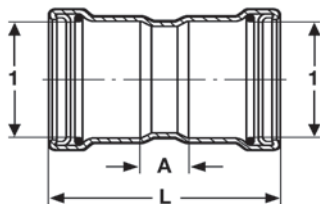
Part No.	Size (mm x in) 1 x 2	A (mm)	L (mm)
453039	15 x 1/2"	7	44
453046	22 x 3/4"	11	47
453053	28 x 1"	13	52
453060	35 x 1 1/4"	12	54
453084	42 x 1 1/2"	10	69
453091	54 x 2"	19	80

**Copper Nickel Female Adapter (P x FPT) — Model 0312.5**


Part No.	Size (mm x in) 1 x 2	A (mm)	L (mm)
461188	15 x 1/2"	7	43
461195	22 x 3/4"	8	45
461201	28 x 1"	10	51
461218	35 x 1 1/4"	9	52
461225	42 x 1 1/2"	11	64
461249	54 x 2"	13	71

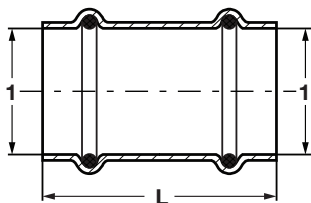
**Copper Nickel Coupling with stop (P x P) — Model 0315**


Part No.	Size (mm) 1	A (mm)	L (mm)
453107	15	5	50
453114	22	10	56
453121	28	10	58
453138	35	10	62
453145	42	12	84
453152	54	12	92

**Copper Nickel XL-Coupling with stop (P x P) — Model 0315XL**


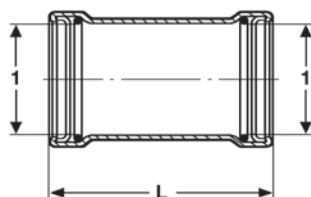
Part No.	Size (mm) 1	A (mm)	L (mm)
556495	76.1	25	125
556501	88.9	25	125
556518	108	27	147

**Copper Nickel Coupling no stop (P x P) — Model 0315.3**



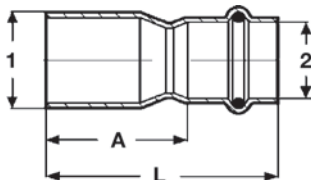
Part No.	Size (mm)	L (mm)
	1	
453299	15	50
453305	22	56
453312	28	58
453329	35	62
453336	42	84
453343	54	92

**Copper Nickel XL-Coupling no stop (P x P) — Model 0315.5XL**



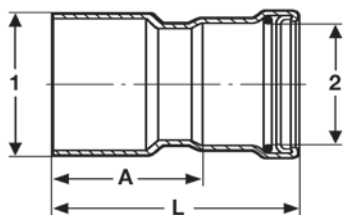
Part No.	Size (mm)	L (mm)
	1	
453411	76.1	125
453428	88.9	125
453435	108	147

**Copper Nickel Reducer (FTG x P) — Model 0315.1**

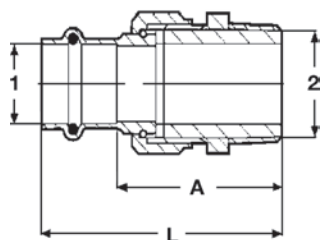


Part No.	Size (mm)	A (mm)	L (mm)
	1 x 2		
452810	22 x 15	36	58
452827	28 x 22	36	59
452834	35 x 22	46	69
452841	35 x 28	39	63
453251	42 x 28	63	87
453268	42 x 35	56	82
453275	54 x 35	71	97
453282	54 x 42	65	101

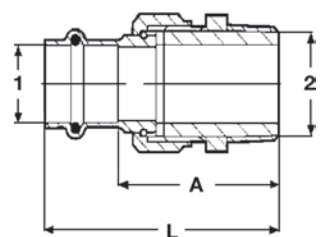
**Copper Nickel XL-Reducer (FTG x P) — Model 0315.1XL**



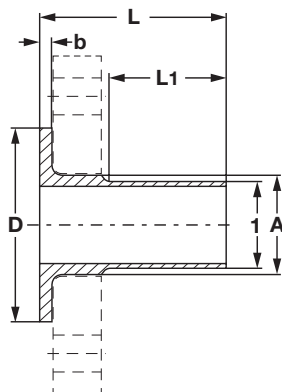
Part No.	Size (mm)	A (mm)	L (mm)
	1 x 2		
453350	76.1 x 42	99	136
556648	76.1 x 54	93	133
453374	88.9 x 54	99	140
556198	88.9 x 76.1	91	141
556204	108 x 76.1	111	161
556211	108 x 88.9	104	154

**Copper Nickel Union (P x R-thread) — Model 0365**


Part No.	Size (mm x in) 1 x 2	A (mm)	L (mm)
477172	15 x 1/2"	44	66
477189	22 x 1/2"	48	71
477196	22 x 3/4"	49	73
477202	28 x 1"	57	81
477219	35 x 1 1/4"	62	88
534684	42 x 1 1/2"	66	101

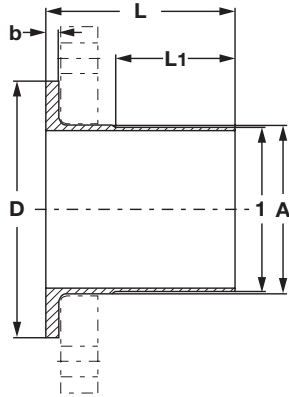
**Copper Nickel Union (P x MPT) — Model 0365.5**


Part No.	Size (mm x in) 1 x 2	A (mm)	L (mm)
477226	15 x 1/2"	44	66
477233	22 x 1/2"	48	72
477240	22 x 3/4"	50	73
477264	28 x 1"	58	81
477257	35 x 1 1/4"	61	87
534691	42 x 1 1/2"	68	104

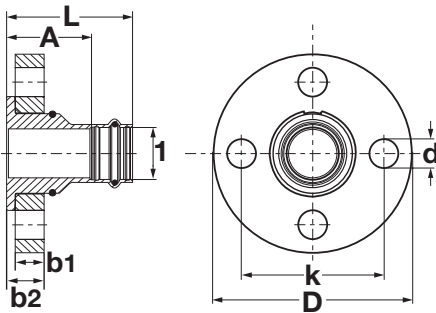
**Copper Nickel Flange Adapter (FTG) — Model 0359.3**


Part No.	Size (mm) 1	A (mm)	L (mm)	L1 (mm)	D (mm)	b (mm)
454067	22	27	67	39	58	5
454074	28	32	70	42	68	5
454081	35	40	75	47	78	5
454098	42	47	88	55	88	6
454104	54	59	91	58	102	6

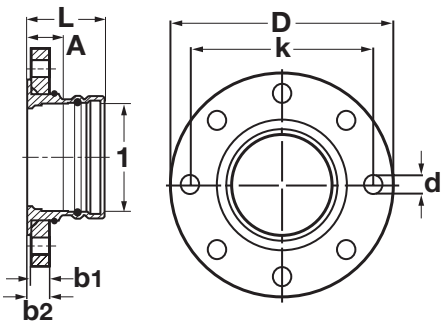


**Copper Nickel XL-Flange Adapter (FTG) — Model 0359.3XL**


Part No.	Size (mm)	A (mm)	L (mm)	L1 (mm)	D (mm)	b (mm)
1						
454111	76.1	78	100	67	122	6
454128	88.9	91	100	62	138	7
454135	108	110	110	72	158	7

**SanPress Bronze Adapter Flange — Model 2259.5U**


Part No.	Size (mm)	A (mm)	L (mm)	b1 (mm)	b2 (mm)	D (mm)	k (mm)	d (mm)	Number of Bolt Holes
1									
592011	28	41.5	65	16	21	110	79	16	4
592028	35	44.5	70	16	21	115	89	16	4
592035	42	47	83	16	21	125	98	16	4
592042	54	50	90	16	21	150	121	19	4

**SanPress Bronze Adapter Flange — Model 2259.5XU**


Part No.	Size (mm)	A (mm)	L (mm)	b1 (mm)	b2 (mm)	D (mm)	k (mm)	d (mm)	Number of Bolt Holes
1									
592059	76.1	24.8	78	16	21	180	140	19	4
592066	88.9	26.8	80	18	23	190	152	19	4
592073	108	16.8	80	18	23	230	191	19	8

**V** **Viega LLC**  
585 Interlocken Blvd.  
Broomfield, CO 80021

Phone (800) 976-9819  
[www.viega.us](http://www.viega.us)

DD-SP 0819 SeaPress Metric Fitting System

