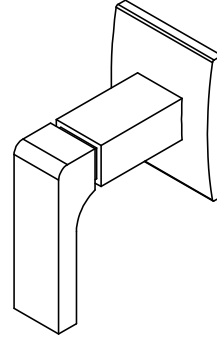




### Features

- Use for wall stop, wall diverter or deck diverter
- Rough rough-in (50-W-R, 75-W-R, WDV-R, DDV-R) sold separately
- Solid brass construction
- Over 30 finishes including 15 PVD finishes

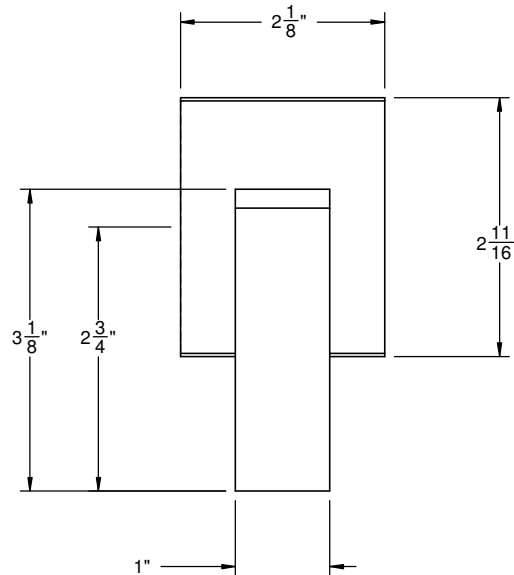
## TO-70-W



### Codes/Standards

Product meets or exceeds the following:

- ASME A112.18.1/CSA B125.1
- ADA compliant



THRU HOLE SEPCIFICATIONS		
	MIN	RECOMMENDED
VALVE:	$\text{Ø}11/16$ "	1-1/4"

